

# Lesson #23 Word Cards

## Short/Long *a*

hat	path	same
jack	glad	safe
ask	name	gave
slap	date	gate
fast	race	have
lap	plane	what
flag	cape	
pass	page	



You're in first place! Move ahead 2 spaces.

have

date

ask

# Race the Fast Lap

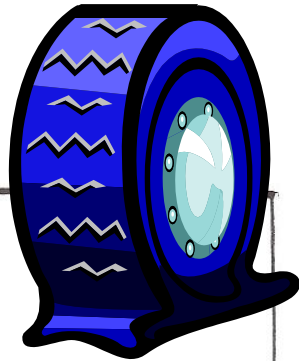
Short and Long –a Game  
Lesson #23

race

slap

plane

fast

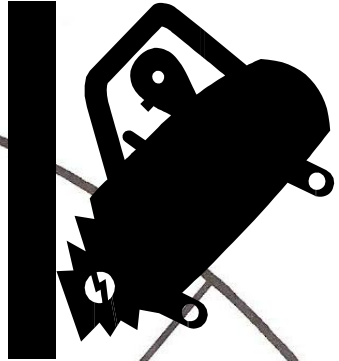


Flat tire!  
Lose a turn.

jack

name

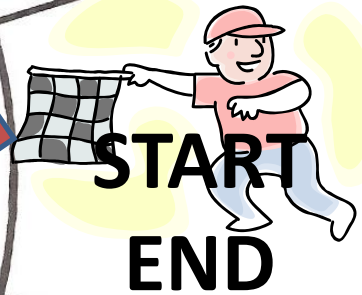
Hit the wall  
on the turn.  
Go back 1  
space.



Directions:

- Roll the dice and move your piece along the path.
- Read the word you land on and tell if the word has a Long or Short –a pattern.
- Write the word on your recording sheet in the correct column.

hat



page

cape

what

lap

Flamingo  
Fabulows in  
Second Grade

# Lesson #24 Word Cards

## Short/Long *a*

cap	late	rain
last	tape	wait
plan	bake	nail
sat	base	gain
flat	shade	fail
tax	made	pail
lake	maze	plain
wave	sale	sail

sale

# Race in the Rain

Short and Long -A Game  
Lesson #24

tax

fail

maze

base

fast

pail

sail

The wind blew  
your umbrella  
inside out!

Lose 1 turn.



Spot a rainbow!

Move ahead 2  
spaces.



hat

made

shade

flag

plain

**START**



**cap**

**lake**

**rain**

You forgot your  
rain boots at  
home. Go back  
to START.



**last**

**wave**

**wait**

**plan**

**late**

**nail**

**sat**

**tape**

**gain**

**flat**

**bake**

Directions:

- Roll the dice and move your piece along the path.
- Read the word you land on and tell if the word is Long or Short -a.
- Write the word on your recording sheet in the correct column.

Flamingo Fabulous in Second Grade

# Lesson #25 Word Cards

## Long *-a* Patterns

same

mail

day

whale

pain

say

flake

train

play

grape

paid

may

stage

brain

pay

grade

snail

stay

chase

chain

clay

shave

tail

said

tale

waist

have

grade

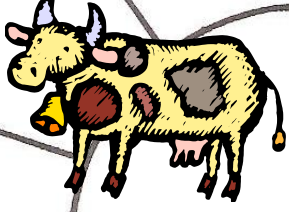
snail

stay

chase

chain

Cow on the track. Lose 1 turn.



# Get to the Train Station!

## Long -a Game

### Lesson #25

clay

shave

tale

have

tail

waist

waste

Flamingo Fabulous in Second Grade

You pass a freight train. Move ahead 2 spaces!

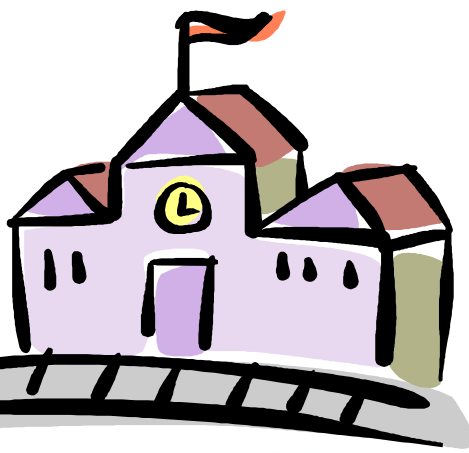


gain

plain

wave

shade





Tunnel blocked. Go back 1 space.

pay

brain

stage

may

paid

grape

said

flake

train

play

say

pain

# Long -a Patterns:

*a\_e ai ay oddball*

You lost your ticket. Go back 2 spaces.

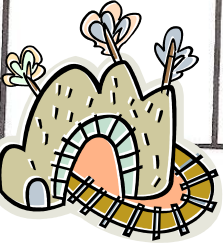
whale

mail

day

same

**START**



# Lesson #26 Word Cards

## Short/Long -e

well

week

she

step

peel

he

west

weed

we

men

peek

me

bed

speed

help

keep

belt

You're making great time!  
Move ahead 2 spaces.

he

west

weed

men

we



Directions:

•Use the spinner to move spaces on the game board.

•Read the word you land on and tell if the word has a Long or Short -e pattern.

•Write the word on your recording sheet in the correct column.

peel



step

You forgot one of your sheep buddies. Go back to **START**.



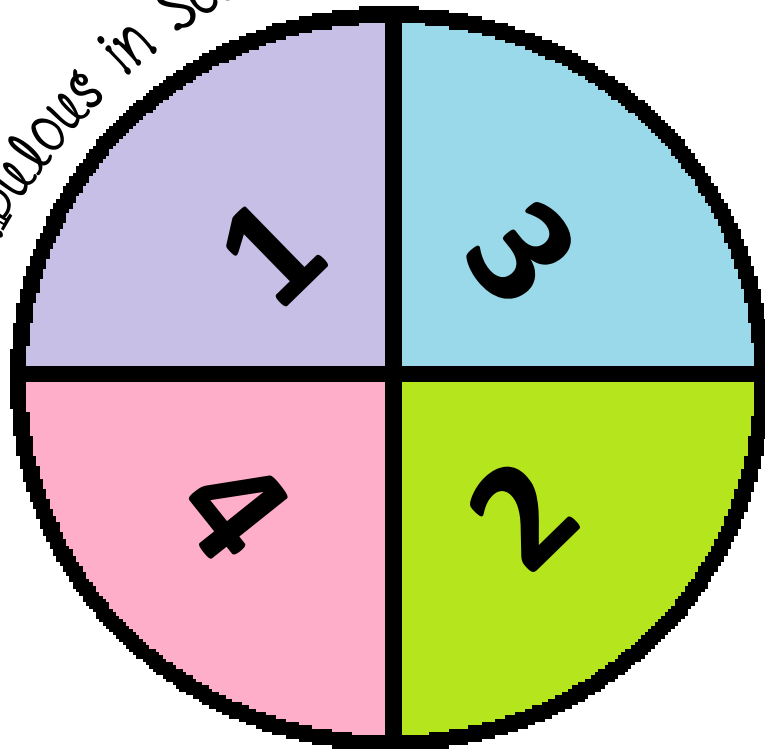
she

week

well



*Flamingo Fabulous in Second Grade*



**START**

Jeep won't go.

Lose a turn.

peek

me

bed

speed

help



The sheep arrived safely. You win!

yet

creep

he

How Many Sheep in the Jeep?

Short and Long -e Game  
Lesson #26

bell

sheet

left



A sheep fell out of the jeep. Go back 3 spaces.

keep

she

belt

need

best

